

THE PHILADELPHIA ASSOCIATION OF PARALEGALS

2013 EDUCATION CONFERENCE

Friday, November 8, 2013

The Progressive
Paralegal

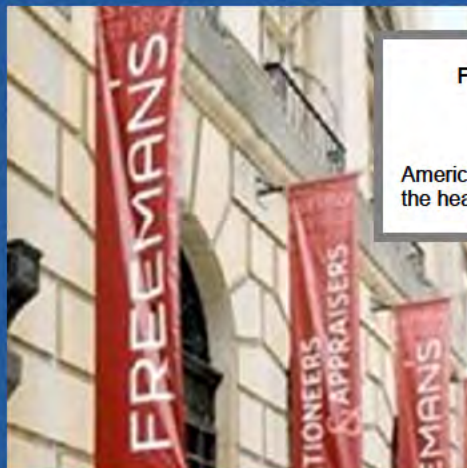
~ Covering all the
Bases



SESSIONS



RECEPTION



FREEMAN'S AUCTION HOUSE

1808 Chestnut Street
Philadelphia, PA 19103

America's oldest auction house, founded in
the heart of Philadelphia in 1805.

2013 PAP SPONSORS

The Philadelphia Association of Paralegals would like to express our sincere appreciation to all of our committed sponsors in our 40th Anniversary year:

PLATINUM (combined Gold and Ruby Sponsorships)

Signature Information Solutions • Veritext
Esquire Deposition Solutions • Love Court Reporting*

GOLD

Kroll Ontrack • Peirce College

SILVER

Conant Document & Print Services • Magna Legal Services

BRONZE

Dennis Richman's Services for the Professional
Document Technologies (DTI)
The MCS Group

RUBY (includes Platinum Sponsorships)

Abelson Legal Search • Conant Document & Print Services**
Heaven Sent • Scarab Consulting
Everett Kelley Associates*** • Golkow Technologies

LAW FIRM RUBY SPONSORS

Saul Ewing LLP • Saltz Mongeluzzi Barrett & Bendesky PC • McCarter & English, LLP
• Hangley Aronchick Segal Pudlin & Schiller • Flaster/Greenberg PC

LAW FIRM SPONSOR

Pepper Hamilton LLP

EDUCATION CONFERENCE SPONSORS

See Association Acknowledgments +
Platinum and Gold Sponsors listed above

TO OUR MEMBERS AND READERS: Please consider supporting PAP sponsors first -- and rotating them -- whenever possible. Don't forget to tell them you're a PAP member, and be sure to ask whether any discounts are available using our 2013 discount code, **40PAP13**. Please also keep our sponsors in mind for referrals to your friends.

THANK YOU!

*Special Thanks to Jeff Love for sponsoring the 2013 Pro Bono Award.

**Sincere Thanks to Mark Bornstein, Devon Shayne and all at Conant for our Ruby Gala program.

***Special Thanks to Lisa McDermott, President, who also co-sponsored this year's Joan Weldon Memorial Scholarship.

The Philadelphia Association of Paralegals'

Annual Education Conference

*Friday, November 8, 2013
Radisson Blu Warwick Hotel - Philadelphia*

SCHEDULE OF EVENTS

*Registration: 8:00 a.m. – 8:55 a.m.
Grand Ballroom*

Continental Breakfast: 8:00 a.m. – 9:00 a.m.

Session I: 9:00 a.m. – 10:15 a.m.

Morning Break: 10:15 a.m. – 10:45 a.m.

Session II: 10:45 a.m. - Noon

*Luncheon: 12:00 Noon - 2:00 p.m.
Grand Ballroom*

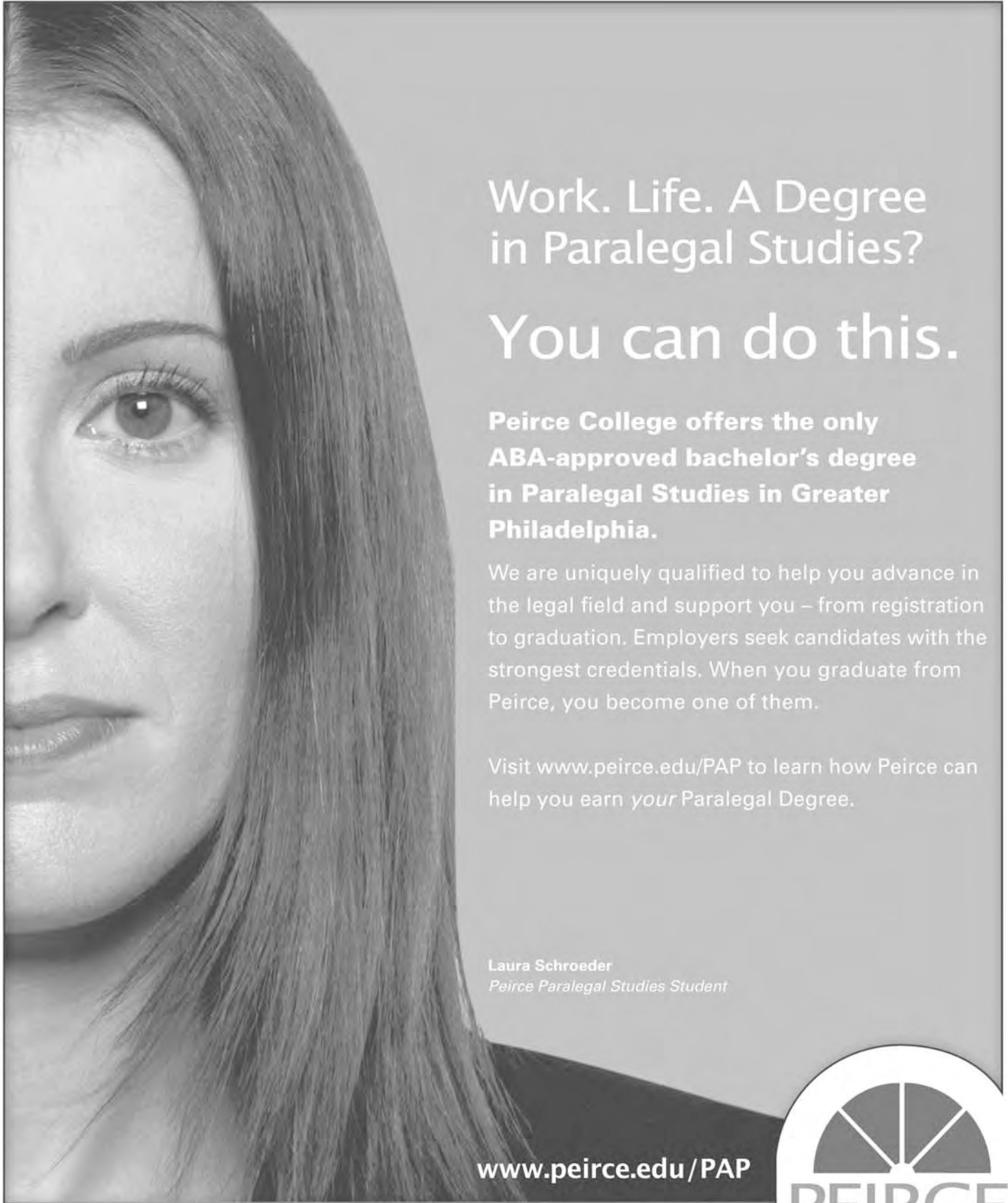
*Keynote Address by
The Honorable Sandra Mazer Moss*

Session III: 2:00 p.m. – 3:15 p.m.

Afternoon Break & Exhibitor Raffles: 3:15 p.m. – 3:30 p.m.

Session IV: 3:30 p.m. – 4:45 p.m.

EXHIBIT AREA: 8:00 A.M. - 4:45 P.M.



Work. Life. A Degree
in Paralegal Studies?

You can do this.

**Peirce College offers the only
ABA-approved bachelor's degree
in Paralegal Studies in Greater
Philadelphia.**

We are uniquely qualified to help you advance in the legal field and support you – from registration to graduation. Employers seek candidates with the strongest credentials. When you graduate from Peirce, you become one of them.

Visit www.peirce.edu/PAP to learn how Peirce can help you earn *your* Paralegal Degree.

Laura Schroeder
Peirce Paralegal Studies Student

www.peirce.edu/PAP

1420 Pine Street, Philadelphia, PA 19102

 [FACEBOOK.COM/PEIRCECOLLEGE](https://www.facebook.com/PEIRCECOLLEGE)  [@PEIRCECOLLEGE](https://twitter.com/PEIRCECOLLEGE)





The Philadelphia Association of Paralegals

A Charter Member of the National Federation of Paralegal Associations

P.O. Box 59198, Philadelphia, PA 19102-9198

☎ 215-255-8405

PhilaParalegals.com

1973-2013



✉ PhilaParalegals@verizon.net

November 8, 2013

Dear Attendees:

Welcome to PAP's 2013 Education Conference! In keeping with tradition, we have an abundance of CLE choices during all four sessions. We are also very excited to have Judge Sandra Mazer Moss as our keynote luncheon speaker; she has a true appreciation for the paralegal profession.

We wouldn't be able to offer this conference without our vendors, so please be sure to stop by their tables throughout the day. Also, please take a moment to learn about their services – and not just to have your bingo card signed. If you can't use the sponsor's services, you may know someone who can. Using PAP sponsors allows us to continue to offer discounted rates to our members throughout the year.

Everyone at PAP is indebted to our longtime Education Committee Chair, Lyndora Patterson Tiller, for her dedication to orchestrating yet another spectacular conference and commitment to excellence when it comes to the quality of our CLEs. Thank you Lyndora! Also, immediate past president, Christine Flynn, went out of her way to secure terrific giveaways for attendees, such as hotel getaways, restaurant certificates and tickets to local venues. Thanks Chris! Our marketing committee, led by Theresa Coger, Pa.C.P. and Monica Londo, with assistance from Melissa Lewis and Susan Evans, as always, did an outstanding job securing today's sponsors. Extra credit goes to Desiree Purvenas Hayes, RP and Lisa Dean for securing Judge Moss and to Susan Evans for procuring this evening's reception at Freeman's Auction House. While I would like to properly thank the rest of our Board and Committee Chairs here, that would take up the rest of this publication, and then some. Please know that your time and effort in assisting with this conference are greatly appreciated.

I won't keep you in suspense any longer. The outstanding speakers teaching our CLE sessions and our luncheon await your attendance. Thank you for joining us.

Very truly yours,

JUDY STOUFFER, RP®
President

Esquire is pleased to support The Philadelphia Association of Paralegals



Congratulations CELEBRATING 40 YEARS OF EXCELLENCE

Esquire combines responsive service, impeccable quality, and powerful technology to help our clients get more out of every deposition:

- Global Court Reporting Coverage
- Advanced Legal Video Services
- Certified Realtime Reporters
- Complete Support for Arbitrations and Mediations
- Streaming Depositions
- Synchronized Video
- Secure Online Transcript and Video Repository
- Portable Videoconferencing and Internet Depositions
- Interpreters and Conference Suites
- Complex Litigation Support

One call or click to schedule anywhere **215.988.9191** or **www.esquiresolutions.com**



www.facebook.com/EsquireSolution



[twitter@EsquireSolution](https://twitter.com/EsquireSolution)



www.linkedin.com/company/esquire-solutions



The Philadelphia Association of Paralegals

*Promoting Excellence
in Skill and Ability*

ASSOCIATION ACKNOWLEDGMENTS

We would like to thank the Education Committee members, Theresa Coger, Karen Daemer, Lisa Dean, Christine Flynn, Anna Maria Jakubowska-Glowacka, Monica Londo, Vivian Luckiewicz, Jennifer Mami, Babette Pace, Victor Panieczko, Desiree Purvenas-Hayes, Wendy Reczek, and Judy Stouffer for their assistance with the organization of The Philadelphia Association of Paralegals' 2013 Education Conference. Special thanks to Marketing Committee members Susan Evans and Melissa Lewis for their tireless efforts, as well as PAP's administrative assistant, Jana Henry.

We also want to acknowledge our Keynote Speaker, The Honorable Sandra Mazer Moss, and all of the speakers for taking the time out of their busy schedules and volunteering their time and effort in making the Education Conference a success. On behalf of the Education Committee and the Board of Directors, we extend our sincerest thanks.


On behalf of The Philadelphia Association of Paralegals' Education and Marketing Committees, we thank the following businesses for their continued support and contribution to this event:

2013 Education Conference Supporting Vendors


Abelson Legal Search ~ B & R Services for Professional ~ Center City Legal Reproductions ~ Corporation Service Company ~ Esquire Solutions ~ Golkow Technologies ~ Kroll Ontrack ~ Love Court Reporting ~ Magna Legal Services ~ Peirce College ~ RecordTrak ~ Ricoh ~ Signature Information Solutions ~ Summit Court Reporting ~ Tootsie's Salad Express ~ TransPerfect Legal Solutions ~ Veritext

In addition, we would like to give a special shout out to the law firm of Berner Klaw & Watson for allowing us to hold our meetings at their offices throughout the planning of this event.

Lyndora Patterson Tiller
Education Committee Chairperson



A global network of "we can handle that."

 **Kroll Ontrack.**

technology | consulting | document review

Whatever the size of your ediscovery project, you want to know that it will be handled efficiently, effectively and within your budget. Partner with Kroll Ontrack for end-to-end consultative services to successfully manage litigation support, regulatory inquiries or investigations. You'll have one case manager, one set of tools, one contract and one invoice. Oh, and hundreds of ediscovery gurus at your service 24/7. You give us the deadline; we'll give you the results.

Get our Document Review Best Practices Kit at www.krollontrack.com/kit

*Actual Kroll Ontrack employees

2013 Keynote Speaker

THE HONORABLE SANDRA MAZER MOSS

Judge Moss is a Civil Division Judicial Team Leader in the First Judicial District of Pennsylvania. Her duties include supervising a voluminous docket of complex medical malpractice, products liability and catastrophic accident cases, while overseeing a team of six trial judges. She is the founder and coordinating judge emeritus of Philadelphia's nationally recognized Complex Litigation Center. In that capacity she created ground breaking case management procedures in Mass Tort Litigation particularly in Asbestos and eighteen Pharmaceutical Programs where she supervised over 9,000 mass tort cases.

Judge Moss was a founding member and chair of the State Judges Mass Tort Litigation Committee (MTLC founded in 1991), which was the first national organization to develop common approaches to problems in mass tort litigation and for eight years was a standing committee of the Conference of Chief Justices. She also testified before the United States Senate Judiciary Committee concerning legislative and judicial solutions to the asbestos problem nationwide and addressed the Conference of Chief Justices and the Federal Court's Multi-District Litigation Judges on managing complex litigation.

Judge Moss was appointed in 2012 by Chief Justice Ronald Castille to represent Pennsylvania on a National Multi-Jurisdictional Task Force to create a Best Practices handbook for State/Federal coordination and cooperation in Complex Litigation. In that capacity she was selected to represent the State Judges at the Federal Multi-District Litigation Judges 2012 annual conference. Judge Moss is chair of the First Judicial District's Civil Rules Committee and an executive committee member of the Pennsylvania Conference of State Trial Judges. She is vice president of the Temple University Beasley School of Law's Alumni Association and current Chancellor of the Brandeis Law Society. Judge Moss was the 2007-2008 President of the Temple American Inn of Court and is a National Trustee of the American Inns of Court. She was selected to represent the American Inns of Court at the 2011 opening of the United Kingdom's Court year in London.

Judge Moss received the Philadelphia Bar Association's 2007 Justice William J. Brennan Jr. Distinguished Jurist Award which recognizes a jurist who adheres to the highest ideals of judicial service. She was also selected as the Beasley School of Law's Certificate of Honor Recipient at Temple University's Founder's Day Celebration in 2008. In 2010 the Philadelphia Legal Intelligencer honored her as a Woman of Distinction. The Bar Association's State Civil Litigation Section at its 2011 annual meeting honored Judge Moss for distinguished service and dedication to their organization and to the Court. In 2013 Judge Moss was inducted into the National Trial Lawyer's Hall of Fame recognizing her Twenty-Five year contribution to Mass Tort Litigation.

Judge Moss has been a faculty member at the National Judicial College since 1992 teaching Civil Procedure and Complex Litigation to Judges across the country. In recognition of her service and dedication, the National Judicial College honored her with the Advancement of Justice Award in 2011. She has also taught at Temple University's Beasley School of Law, Widener Law School, Drexel University Honors Program, Philadelphia City Solicitor's Office, Philadelphia and Pennsylvania Bar Associations, Pennsylvania Bar Institute and the Pennsylvania Conference of State Trial Judges. As coordinating Judge Emeritus of the Court's Mass Tort Program she has been invited to speak about her creative case management procedures at numerous Asbestos and Pharmaceutical conferences nationwide.

She received a B.S. in journalism and a J.D. from Temple University and practiced law for eight and a half years specializing in medical malpractice, products liability and toxic torts.



**PHILADELPHIA
BAR ASSOCIATION**

The only official provider of discounted court reporting services exclusively for Philadelphia Bar Association members.

CONGRATULATIONS PHILA. ASSOC. OF PARALEGALS ON 40 YEARS OF EXCELLENCE

THE POWER OF LOVE

WHY CHOOSE LOVE COURT REPORTING?

- #1 in Customer Service Satisfaction
- Voted "Best of 2012 & 2011"
- Service, Technology, Support
- Personalized, Professional Service
- Three Quality checks of Transcript
- Receive Transcript on time
- Reporter arrives on time
- Nationwide Coverage
- Experienced, Certified & Registered Reporters
- 24/7 Accessibility
- One call takes care of ALL your court reporting services



**Member of the National Court
Reporters Association**

**Member of the Pennsylvania
Court Reporters Association**

**SERVING PENNSYLVANIA,
NEW JERSEY & DELAWARE
WITH NATIONWIDE COVERAGE**

LOVE
COURT REPORTING, INC.

1500 Market Street, 12th Floor, East Tower, Philadelphia, PA 19102, (215) 568-5599
2002 Sproul Road, Suite 100, Broomall, PA 19008, (610) 355-1948
TOLL FREE: 888-462-6200 • Fax: (610) 355-1540 • Email: loveus@lovecourtreporting.com
www.lovecourtreporting.com

The Philadelphia Association of Paralegals'

Annual Education Conference

***Friday, November 8, 2013
Radisson Blu Warwick Hotel - Philadelphia***

M E N U

The Warwick Salad

***Green & Red Oak Leaf Lettuce, Crumbled Bleu Cheese, Dried Cranberries,
Toasted Walnuts & Sliced Dates with a Port Wine Vinaigrette***

Rolls & Butter

Cedar Plank Jail Island Salmon

OR

Pecan Crusted Chicken with Pomerry Mustard Cream Sauce

OR

***Fusilli Pasta topped with Seasonal Vegetables & Tofu (vegan)
Fusilli Pasta topped with Seasonal Vegetables & Chicken
in a Roasted Tomato Sauce (gluten-free)***

White Chocolate Raspberry Cheesecake

OR

***Raspberry Sorbet with Seasonal Fresh Berries
(vegan & gluten-free)***

Water ~ Iced Tea ~ Coffee ~ Hot Tea

ABELSON

Education is the Key to Professional Success!

We have worked closely with law firms of all sizes and companies since our founding in 1990; providing paralegal talent to clients throughout the Philadelphia region.

Wondering about your next step in your career? Call us today.
We're here to help.

*Wishing All of our Friends at
PAP a Successful Conference.*



Cathy Abelson

Joyce Feinstein

The Philadelphia Association of Paralegals

DONATIONS

November 8, 2013

The Association extends its sincerest thanks to the following individuals and businesses for giveaways:

Keeping it Civil (signed by the Author, Margaret Klaw)

Radisson Blu Warwick Hotel (overnight stay for two with breakfast at Tavern 17)

The Ritz-Carlton Philadelphia (overnight stay for two with valet parking)

Sonesta Hotel Philadelphia (overnight stay for two with breakfast)

World Café Live (2 tickets for future show)

National Constitution Center (4 Passes)

Cavanaugh's Head House Square Restaurant (\$50 gift card)

Field House Sports Bar (\$25 gift card)

McGillians Old Ale House (\$25 gift card)

Starbucks Gift Basket

Brunswick Zone XL Feasterville (FamilyFUNtastic package)

Visit our NEW website
www.veritext.com



Superior Service. Advanced Technology.

- ▶ Court Reporting
- ▶ Digital Videography
- ▶ Videoconferencing
- ▶ Multimedia Depositions
- ▶ Online Repositories
- ▶ Veritext Virtual
- ▶ Mobile Apps
- ▶ Video Streaming
- ▶ Video Synchronization
- ▶ Exhibit Management Solutions

Proud Supporter of



The Philadelphia Association
of Paralegals
*Promoting Excellence
in Skill and Ability*



Conduct remote depositions &
conferences with Veritext Virtual.

Find out more at:
www.veritext.com/veritext-virtual

Phone: 888.777.6690 | Fax: 215.241.1539
1801 Market Street, Suite 1800 | Philadelphia, PA 19103

SESSION I

9 – 10:15 a.m.

ETHICS: Legal Ethics – Life Lessons

Ethical issues are of vital importance to all legal professionals. This seminar will provide an overview of ethical standards by combining a presentation on the origin of bar association and paralegal association ethics rules with an introduction to the latest ethics issues related to supervision of paralegals, unauthorized practice of law, protecting confidential information and conflicts of interest. The presentation will combine practical advice and real-life ethical experiences to increase awareness of the paralegal's role in the appropriate operation of the law firm and the protection of its clients.

1.25 NFPA CLE Ethics Credits Pending

1.25 Keystone Alliance CLE Ethics Credits Approved

**Gary Melhuish, Manager
Ballard Spahr, LLP**

Gary Melhuish is the Manager of Litigation Support Services in the Philadelphia office of Ballard Spahr, LLP. Gary has 30 years of experience as a paralegal including more than 20 years as a paralegal manager. He is a Past President of the International Paralegal Management Association (IPMA). He was Adjunct Faculty at the Georgetown University Paralegal Studies Program from 2002 through 2005, where he taught Legal Ethics and Legal Technology. Gary is former member of the ABA's Approval Commission of the Standing Committee on Paralegals and serves on the National Federation of Paralegal Association's PACE Advisory Committee.

Gary received a B.A. from the University of Maryland, an M.A. from Michigan State University and a Certificate from the Institute for Paralegal Training in Philadelphia. He is a frequent speaker at meetings of the Association of Legal Administrators (ALA), Paralegal Super Conferences/Paralegal Leadership Institutes and IPMA training seminars and conferences on topics such as electronic discovery, ethics, corporate transactions, SEC enforcement activities and the future of the paralegal profession. Gary also teaches ethics seminars to paralegals at law firms across the United States and Canada.

SESSION I

9 – 10:15 a.m.

HEALTH CARE REFORM: History is Made . . . Now What?

In March of 2010, President Obama signed the Patient Protection and Affordable Care Act (PPACA) into law. The law fundamentally changes many aspects of health care and health care coverage and significantly expands the federal government's role in both regulating and financing health care coverage. While many changes under the law have already gone into effect, the major market reforms are set to take effect in 2014. This session will provide an overview of the PPACA and what it attempts to achieve, the legal and practical implications to individuals who either have coverage or will be able to obtain coverage under the law and where the debate is likely to head once the law is fully implemented.

1.25 NFPA CLE Credits Pending

1.25 Keystone Alliance CLE Credits Approved

**Thomas A. Hutton, Esquire
VP Government Affairs and Deputy General Counsel
Independence Blue Cross**

Prior to joining Independence Blue Cross, Tom was Deputy General Counsel in the Pennsylvania Governor's Office of General Counsel, where he served as the legal liaison and legislative counsel to numerous executive agencies, specializing in regulatory issues, government contracting and insurance matters, as well as the Commonwealth's e-business and e-government initiatives.

From 1997 to 2000, he served as a Commissioner of the National Conference of Commissioners on Uniform State Laws. He currently serves on the Board of Directors of the People's Emergency Center, Pennsylvania's oldest and most comprehensive social service agency for homeless women, teenagers and their children.

Tom received a B.A in Government and International Studies from the University of Notre Dame in 1989. He earned his law degree from the Dickinson School of Law in 1992.

SESSION I

9 – 10:15 a.m.

***CORPORATE/IN-HOUSE/eDISCOVERY:
Corporate eDiscovery Practice and
The Evolving Role of the Paralegal***

This session will cover eDiscovery from the corporate/in-house aspect. We will discuss organizational goals while providing an overview regarding partnerships, roles and responsibilities in a corporate setting. We will track the evolution of the paralegal's role in corporations, including the path from the traditional paralegal role to the paralegal specialist and then to discovery specialist to discovery manager.

1.25 NFPA CLE Credits Pending

1.25 Keystone Alliance CLE Credits Approved

**Gerard G. Boccuti, Esquire
Director, Pfizer Legal Division**

Gerry Boccuti is the Director of the Discovery Services Team within the Pfizer Legal Division. His team oversees and coordinates discovery and litigation support activities for Pfizer matters in Litigation, Government Investigations, Intellectual Property and other matters. Before joining Pfizer, Gerry was the Litigation Support Manager for the Wyeth Legal Department.

Prior to his most recent positions at Wyeth and Pfizer, Gerry provided professional consulting services to corporations throughout the United States and overseas. His expertise is in the area of law department work-process analysis, implementation of information technology solutions, facilitating mergers of corporate law departments and developing electronic discovery strategies. He was also an Assistant Manager in the DuPont Legal Department in Wilmington, Delaware.

Gerry received a B.S. from Drexel University. He received his law degree from the Widener University School of Law and studied International Law at the University of Padua, Italy. He also has an Executive M.B.A. degree from the University of Delaware. Gerry is a member of DRI and American Corporate Counsel Association and is admitted to practice in Pennsylvania and the District of Columbia.

SESSION I

9 – 10:15 a.m.

LITIGATION: How to Handle the Difficult Client

During this session, paralegals will be presented with some humorous and realistic pointers on how to handle difficult clients, which will also include some role play. Successful interaction with every client utilizes a combination of both legal skills and people skills. This course will focus on five areas: (1) understanding the perception from both points of view, (2) approaching the client, (3) interaction with the client, (4) resolution of the services, and (5) ending the relationship (or not!) Professionalism, competence and confidence are valuable resources – after all, paralegals are key representatives of not only the attorneys they work with, but the law firm as well. By using the techniques learned in this course, we will learn how to interact with each client so that the paralegal becomes a valuable part of each client's representation.

1.25 NFPA CLE Credits Pending

1.25 Keystone Alliance CLE Credits Approved

**John M. DeFeo, Esquire
Snyder & Barrett**

John DeFeo is a Senior Trial Attorney with the Law Offices of Snyder & Barrett, located in Philadelphia, PA. His areas of expertise include Toxic Tort, Asbestos, Tort Litigation, Insurance Defense, Bodily Injury & Property Damage lawsuits, Commercial Litigation, Auto Liability/Negligence, General Liability, Premises Liability, Personal Injury, UMIUM & PIP. In addition to his busy litigation practice, John serves as a Mediator for the Judge Pro Temp Program in Philadelphia County. He also serves as an Arbitrator in private ADR hearings and as a Mediator for private mediation conferences. John serves as a Grand Knight with the Knights of Columbus, San Salvador Council, is a member of the Justinian Society and serves as a Judge for the Temple School of Law- Mock trial session. He has given numerous in house seminars, moot court presentations and a CLE presentation.

John was admitted to the Pennsylvania Bar in 1982. He is also admitted to the New Jersey Bar (inactive), the U.S. District Court for the Eastern District of Pennsylvania, the U.S. Court of Appeals for the Third Circuit and the United States Supreme Court.

SESSION II

10:45 a.m. – Noon

EMPLOYMENT LAW:

Workplace Bullying: Is it Illegal?

Workplace bullying is a major problem for employers and employees, and is four times more prevalent than illegal harassment. This presentation will review the following: definition of, and actions that constitute, workplace bullying; statistics on workplace bullying (2007 & 2010 national surveys); effects of bullying on victims and employers; challenges to workplace bullying under the antidiscrimination laws and the tort of intentional infliction of emotional distress; and proposed anti-bullying legislation (Healthy Workplace Bill) introduced in Pennsylvania and other states.

1.25 NFPA CLE Credits Pending

1.25 Keystone Alliance CLE Credits Approved

Eric Matusewitch, PHR, CAAP

Eric Matusewitch, former deputy director of the New York City Equal Employment Practices Commission, was recently appointed as a member of the Montgomery County (MD) Committee on Hate/Violence. He has taught courses on employment discrimination law for the Long Island University Paralegal Studies Program and the New York University School of Continuing and Professional Studies. Eric holds masters' degrees in political science and library science and a certificate in paralegal studies, and is certified as a Professional in Human Resources (PHR) and an Affirmative Action Professional (CAAP).

He is the author of the *Manager's Handbook on Employment Discrimination Law* (Andrews Publications, 2000) and 170 article on employment law for national, human resources, legal and paralegal publications. Eric has been quoted in national and professional publications, including *O: The Oprah Magazine*, *Fortune Small Business Magazine*, *New York Times*, *New York Observer*, *Chicago Tribune*, *Detroit News*, *Indianapolis Star*, *Christian Science Monitor*, *News Journal* (Wilmington, DE), *Knoxville News Sentinel*, *Patriot-News* (Harrisburg, PA), *ABCNews.com*, and *CNNMoney.com* and appeared as a guest expert on the *Monte! Williams Television Show*. He has also been profiled in *Laurel Vietzen, Elder Law for Paralegals* (Wolters Kluwer, 2011), and received the Affirmative Action Award from the New York City Department of Health in 1987 and the Making A Difference Award from the National Association of Legal Assistants in 2012.

Eric is a member of the American Association for Affirmative Action, Society for Human Resource Management, Human Resource Association of the National Capital Area, National Association of Legal Assistants and National Capital Area Paralegal Association.

SESSION II

10:45 a.m. – Noon

ESTATES & TRUSTS:

Ethics Issues

in Estate and Trust Administration

When paralegals and lawyers assist in the administration of estates and trusts, there are a number of legal ethics issues which may arise, starting with identifying the client. During the estate or trust administration, encountering ethics issues such as confidentiality, conflicts of interest, safeguarding client property and dealing with unrepresented third parties is not uncommon. Using hypothetical situations, we will discuss recognizing and then dealing with such legal ethics issues consistent with the Pennsylvania Rules of Professional Conduct and ethics opinions and legal treatises applying those Rules.

1.25 NFPA CLE Ethics Credits Pending

1.25 Keystone Alliance CLE Ethics Credits Approved

**G. Bradley Rainer, Esquire
Reger Rizzo & Darnall LLP**

Brad Rainer is a partner and chair of the firm's Estates and Trusts Group. He concentrates his areas of practice in estate planning, estate and trust administration and business law, representing individuals, fiduciaries and closely-held businesses and their owners throughout the Mid-Atlantic region. Brad also consults with lawyers and law firms regarding matters of legal ethics, as well as representing lawyers in the formation of law firms and in law firm disputes. He has been engaged as an expert in legal malpractice cases involving such issues as breaches of fiduciary duty, conflicts of interest, standards of care in estate planning, estate and trust administration and business law and legal ethics.

Brad is an adjunct professor at Temple University Beasley School of Law, where he teaches Transactional Practice, a seminar course integrating trusts and estates law, business law and professional responsibility and Planning for the Family that Owns and Operates a Business, a course in the LL.M. program, the focus of which is business succession planning. He also currently serves on the Board of Directors of Alliance Bank.

He lectures on business and estate planning and legal ethics frequently, including programs for the Pennsylvania Bar Institute, Central Atlantic School of Trust, The Fiduciary Education Foundation, Association of Corporate Patent Counsel and a number of estate planning councils. Brad completed his term as a Director of the Pennsylvania Bar Institute in May 2012.

Brad is a member and former chair of the Professional Responsibility Committee and member and former co-chair of the Professional Guidance Committee of the Philadelphia Bar Association. He also chaired the Ethics Committee of the Philadelphia Estate Planning Council and was on the Council's board of directors. He is a member of the Association of Professional Responsibility Lawyers.

In addition to his legal work, Brad devotes a significant amount of time to various community organizations. He currently serves as President of the Board of Directors of the Joseph J. Peters Institute and is the immediate past chair of the Board of Trustees of Northern Children's Services.

SESSION II

10:45 a.m. – Noon

INTELLECTUAL PROPERTY:

Trademark Basics and Prosecution

This seminar will review the basics of U.S. trademark law and the filing and prosecution of U.S. trademark applications. We will also consider what constitutes a trademark, the types of trademarks, the legal basis for protecting a trademark, the trademark selection process, various formats of trademark applications, the application process and trademark usage.

1.25 NFPA CLE Credits Pending

1.25 Keystone Alliance CLE Credits Approved

**Gary A. Hecht, Esquire
Fox Rothschild LLP**

Gary A. Hecht is a partner at Fox Rothschild LLP and has extensive experience in all fields of intellectual property law and in litigation involving intellectual property issues, including matters related to patents, trademarks, copyrights and unfair competition. He prepares and prosecutes mechanical, electrical and computer-related patent applications, as well as counsels clients on intellectual property issues. Gary is well-versed in licensing, infringement, validity and due diligence studies. He also manages international trademark portfolios for U.S. and foreign companies, including those in the fields of chemicals manufacturing, fashion and clothing, medical devices and automotive products.

**Tristram R. Fall, III, Esquire
Fox Rothschild LLP**

Tristram R. Fall, III, is a partner at Fox Rothschild LLP who maintains a general corporate practice with a concentration in intellectual property, computer law, Cyberlaw and Internet-related matters. In particular, he has considerable experience in intellectual property matters, including, but not limited to, copyright application, copyright protection, copyright licensing and copyright enforcement; trademark availability opinions, preparation and prosecution of trademark application preparation, trademark protection and trademark licensing; and development and coordination of international trademark protection and patent licensing.

SESSION II

10:45 a.m. – Noon

LEGAL RESEARCH:

***Using the Internet: If it isn't all there,
how am I supposed to find it?***

A recent article in ABA Journal estimated that only 15% of the 2 million unique volumes in U.S. law libraries are digitized. So if "everything's on the Internet" isn't true, how can you hope to find the information you need? This session will provide tips and techniques that will increase your chances of finding what you want.

1.25 NFPA CLE Credits Pending

1.25 Keystone Alliance CLE Credits Approved

**Dan Giancaterino, MS
Jenkins Law Library**

Dan Giancaterino received his MS in 1989 from Drexel University. He joined the staff at Jenkins Law Library in October 2000.

Dan has given Internet presentations at meetings hosted by county bar associations, as well as organizations such as CIGNA, Community College of Philadelphia, Community Legal Services, Dispute Resolution Institute, Garden State Alliance of Paralegal Associations, Greater Philadelphia Law Library Association, Institute for Paralegal Education, Municipal Court of Philadelphia, PALINET, Pennsylvania Bar Institute, Pennsylvania Conference of State Trial Judges, Pennsylvania Library Association, Pennsylvania Workers' Compensation Judges, The Philadelphia Association of Paralegals, Philadelphia Daily News and SEPTA. On many occasions, Dan has discussed Web searching on The Michael Smerconish Morning Show, The Glenn Beck Program and Bill O'Reilly's Radio Factor on The Big Talker, WPHT 1210 AM.

SESSION III

2 – 3:15 p.m.

Consumer Law & Protection: Primer on the Basics of Consumer Bankruptcy Practice and the Fair Credit Reporting Act

Despite the explicit language of the Fair Debt Collection Practices Act, a surprising number of predatory lenders, collection agencies, and other abusive proxies continue to violate the FDCPA at astonishing rates. Gain a clear overview of the Act's current guidelines for debt collectors, the rights of consumers involved with debt collectors, and the penalties and remedies for violations. We will also cover how the Fair Credit Reporting Act affects clients, as well as the basics of consumer bankruptcy practice (Chapter 13).

1.25 NFPA CLE Credits Pending

1.25 Keystone Alliance CLE Credits Approved

**Stephen Dunne, Esquire
Dunne Law Offices, P.C.**

Stephen M. Dunne is a consumer lawyer admitted to practice in the State and Federal courts of Pennsylvania and in numerous other courts, including the Third Circuit Court of Appeals and the Federal Circuit Court of Appeal for Veterans Claims. He has successfully briefed and argued cases in the federal appellate courts, resulting in favorable decisions for his clients. Stephen is a graduate of New England Law and the Pennsylvania State University. While at New England Law, he was a scholarship recipient in Securities Regulation and interned at the Boston Stock Exchange.

He has been consistently voted and named one of Pennsylvania's Super Lawyers by *Law and Politics*, published by *Philadelphia Magazine* and *Pennsylvania Super Lawyers* for the years 2011-2013. Stephen is highly regarded throughout the legal community for his continuing efforts in helping consumers solve their financial issues. He has appeared on Fox News, written articles for *The Philadelphia Inquirer*, *Philadelphia Daily News* and *The Nation* regarding consumer rights.

Stephen concentrates his practice on the Fair Debt Collection Practices Act (FDCPA), the Fair Credit Reporting Act (FCRA), the Pennsylvania Fair Credit Extension Uniformity Act, Truth in Lending (TILA), Lemon Law, breach of warranty and consumer fraud cases, as well as representing consumers in debt defense cases, bankruptcies and foreclosures. He is an active member of the National Association of Consumer Advocates, the National Association of Consumer Bankruptcy Attorneys and the Philadelphia Bar Association.

SESSION III

2 – 3:15 p.m.

ESTATES & TRUSTS:

Generation-Skipping Transfer (GST) Tax Planning Basics

The federal government imposes a "generation-skipping transfer" (GST) tax on transfers to grandchildren and more remote descendants that exceed certain exemption limits so transferors cannot avoid transfer taxes on the next generation by "skipping" a generation. The GST tax is levied in addition to gift or estate taxes and is not a substitute for them. Like the gift and estate taxes, the GST tax needs to be factored into estate plans of most high net-worth individuals. We will review the basics of the GST tax, including the mechanics of how it is applied in real world situations and discuss different planning methods available for minimizing the impact of the tax.

1.25 NFPA CLE Credits Pending

1.25 Keystone Alliance CLE Credits Approved

**Ross E. Bruch, Esquire
Saul Ewing LLP**

Ross Bruch is an associate in the Personal Wealth, Estates and Trusts Practice, where he concentrates his practice on estate planning and administration, will drafting and federal income, estate and gift taxation. Ross is also involved in matters concerning federal, state and local tax issues, as well as transactional real estate law.

Prior to joining Saul Ewing, Ross worked in Philadelphia Mayor Michael Nutter's Office as an assistant to the Chief Integrity Officer. In this position, he aided in investigations of City of Philadelphia employees for potential corruption and ethical violations. Ross is currently enrolled in the Tax LL.M. and Estate Planning Certificate programs at Temple University Beasley School of Law.

SESSION III

2 – 3:15 p.m.

INTELLECTUAL PROPERTY:

Copyright Law – Termination Provisions Under the 1976 Copyright Act

This year marks the first year in which an author can send a notice of termination of a license or assignment of copyright under Section 203 of the 1976 Copyright Act. This statute provides that, except for a work made for hire, assignments or licenses of copyright by an author made in or after 1978 may be terminated by that author after a specified time period. This seminar will explore issues surrounding the timing of termination, who can terminate, how the "work for hire" exception plays into the termination provision and the problem of joint authors.

1.25 NFPA CLE Credits Pending

1.25 Keystone Alliance CLE Credits Approved

**Lori Landew, Esquire
Partner, Entertainment Law, Fox Rothschild LLP**

Lori, a respected entertainment lawyer, has more than 20 years of experience providing legal and consulting services to clients in the media and entertainment industries, primarily in the areas of music, television and film. Using the firm's Philadelphia, PA office as her home base, she works and travels extensively throughout the United States to serve as trusted entertainment counsel to a variety of clients with a wide array of business and legal needs relating to the creation, use and exploitation of creative content and brand cultivation. In her role as entertainment counsel and advisor, Lori regularly negotiates and drafts complex agreements – including production, distribution, licensing, sponsorship, merchandising, exclusive services, management, talent, development, employment, severance, nondisclosure and settlement agreements – all designed to support and advance her clients' business objectives. Lori's clients include multinational corporations, cultural institutions, closely held businesses, individual artists and creators and well known entertainment and media executives.

Edward L. Brant, Esquire
Associate, Intellectual Property Fox Rothschild LLP

Ed's practice includes a wide range of intellectual property matters, focusing on both the transactional side and litigation. He has extensive experience in foreign and domestic patent protection and enforcement, patentability and trademark clearance opinions, trademark portfolio management, licensing of intellectual property rights, and patent and trademark infringement disputes.

Ed has counseled clients on patent prosecution matters covering the following technologies: Fluorocarbon chemistry; Organic compound synthesis; Polymer chemistry; Catalytic chemistry; Luminescence chemistry; Transition metal alloys; Nanotechnology; Nucleic acid detection probes and assays; and Pharmaceuticals.

SESSION III

2 – 3:15 p.m.

LITIGATION:

Construction Litigation

Mr. Bendesky's firm has earned a national reputation as the country's most specialized and experienced law firm in the representation of victims of construction accidents and construction falls. This program will discuss cross-examination of expert witnesses and witnesses. The focus will be on the importance of researching backgrounds and preparing for cross examination in order to conduct an effective cross-examination. Mr. Bendesky will explain the paralegal's key role in preparing for cross-examination of witnesses.

1.25 NFPA CLE Credits Pending

1.25 Keystone Alliance CLE Credits Approved

**Larry Bendesky, Esquire
Saltz Mongeluzzi Barrett & Bendesky, P.C.**

Larry Bendesky, Managing Shareholder at Saltz Mongeluzzi Barrett & Bendesky, P.C., concentrates his practice on complex civil product liability cases, including those involving the operation of elevators, motor vehicles, motorcycles, power tools and a wide array of equipment used in industry and manufacturing. In addition, he handles litigation involving catastrophic construction accidents. As a trial lawyer, Larry has been lead or co-counsel in numerous high-profile, highly complex cases. He has handled more than seventy-five (75) cases resulting in verdicts or settlements over \$1 million. He served as trial counsel in the Tropicana Casino structural collapse litigation, which settled for \$101 million, the largest settlement of a construction accident case in American history.

Larry has been a member of *Super Lawyers of Pennsylvania*, a peer-selected group of practitioners from around the Commonwealth, every year of eligibility since 2004. He is considered among the Commonwealth's premier product liability and construction accident attorneys. Every year since 2009, he has been named one of the *Best Lawyers in America*

by Best Lawyers, the nation's oldest peer-review publication for the legal profession. Evaluations were based on more than two million detailed evaluations of lawyers by other lawyers.

He is an Honors graduate of Pennsylvania State University (1984) and holds a J.D. from the Widener University School of Law (1987). Larry is also a graduate of the LL.M. program in Trial Advocacy at Temple University Beasley School of Law. He was the recipient of the Faculty Award as the outstanding student/lawyer in his class based on his exceptional achievements in courtroom performance. His association with the Temple LL.M. program continues as an Adjunct Professor of Law and Co-Director of the LL.M. Experts Program. Larry is past President of the Temple American Inn of Court, a group of judges and lawyers devoted to promoting professionalism and ethics in the practice of law.

His bar admissions include the state courts in Pennsylvania and New Jersey as well as the United States District Courts for the Eastern, Middle, and Western Districts of Pennsylvania and the District of New Jersey. He is a member of the American, Pennsylvania and Philadelphia Bar Associations, and is also a member of the Philadelphia Trial Lawyers Association and the American Association for Justice. He serves on the Board of Governors of both the Pennsylvania Association for Justice and the Philadelphia Trial Lawyers Association. Dedicated to upholding the highest standards of professional practice, Larry served as Hearing Committee Chairman of the Disciplinary Board of the Supreme Court of Pennsylvania. In addition, he was appointed to and is a member of the Pennsylvania Supreme Court's Appellate Court Procedural Rules Committee.

SESSION IV

3:30 – 3:45 p.m.

ALTERNATIVE DISPUTE RESOLUTION (ADR):

Orphans' Court Mediation

This seminar will examine current issues in ethics regarding the use of cloud storage, electronic files, electronic mail, social networking and metadata. In addition, case law and ethical opinions will be examined and analyzed. Specific attention will be given to the paralegal's role regarding confidentiality. Practical solutions and approaches will be addressed.

1.25 NFPA CLE Credits Pending

1.25 Keystone Alliance CLE Credits Approved

**William H. Donahue, Jr., Esquire
APM Transitions Mediation Center**

William H. Donahue, Jr., Esquire, APM, founded Transitions Mediation Center in 1995 to address the growing need for mediation in the Philadelphia and South Jersey area as an alternative to expensive, time-consuming and emotionally draining litigation. He mediates a wide range of family disputes including divorce. Specializing in the mediation of high-conflict cases and cases involving children, he often uses a collaborative mediation approach, in which a team of professionals, including a mediator, two attorneys and a therapist, works with the family. As an employment practices mediator, he also mediates workplace disputes. Transitions Mediation Center offers a workplace-training seminar that teaches companies how to set up and maintain their own in-house dispute resolution programs.

Admitted to practice law in 1984, he is a practicing divorce and family lawyer who has maintained a private litigation practice in South Jersey including Camden, Burlington and Gloucester Counties in New Jersey for 20 years. His practice includes divorce, domestic violence, adoption and post-divorce cases, as well as personal injury, criminal matters, real estate and wills and trusts.

He is a nationally recognized speaker on divorce mediation and on workplace mediation and dispute resolution focusing on discrimination, sexual harassment and Americans With Disabilities Act issues. His book *Reconcilable Differences: A Consumer's Guide to Divorce Mediation* explains the basic principles underlying mediation, and shows how couples with whom he has worked were able to use those principles in mediation to resolve their own divorces.

SESSION IV

3:30 – 3:45 p.m.

IMMIGRATION:

“Twenty Years as an Immigration Lawyer – What a Paralegal Needs to Know to Succeed and Thrive in Immigration Practice”

Introduction to Immigration Law for The Paralegal - This seminar will introduce the principals and fundamentals of the four major practice areas of a full service immigration legal practice, including family based immigration, employment based immigration, removal defense and consular processing for immigrants to come to the United States from abroad. This presentation will include the fundamentals of working with immigration attorneys to prepare applications for U.S. citizens to file for permanent residency for a spouse, fiancé, parent and sibling. Participants will learn about preparing applications for U.S. citizenship as well as the various immigrant and non-immigrant visa classifications, including visa sponsorship by employers, religious organizations and other organizations. Special attention will be given to best-practices for working with immigration attorneys and various immigrant communities to achieve maximum productivity and client satisfaction.

1.25 NFPA CLE Credits Pending

1.25 Keystone Alliance CLE Credits Approved

**David E. Piver, Esquire
The Law Offices of David E. Piver**

David Piver founded the Law Offices of David E. Piver in 1994. He holds a law degree from Villanova University and a Master's Degree from Cornell University. He has worked with foreign and U.S. government officials and corporations, establishing business relations and assisting individuals and organizations solve a variety of immigration problems. David lived in Shanghai, China for nearly four years and speaks fluent Mandarin Chinese. He is a member of the American Immigration Lawyers Association, the Pennsylvania Bar and the Philadelphia Bar Association. He is admitted to Federal Practice in the 2nd, 3rd and 4th Circuit Courts of Appeal. His precedent

Federal cases include: *Fiadjoe v. Attorney General*, 411 F.3d 135 (3d Cir. 2005) and *Shah v. Attorney General*, 04-3607 (3rd. Cir. Apr. 28, 2006). David has specialized in immigration law since 1993 and has direct experience in all related practice areas including: labor certification, permanent residency ('Green Card') and temporary work visas. He has successfully resolved immigration issues for professionals, religious workers, entertainers and athletes, among others.

David is also proud to represent numerous world-class athletes in extreme sports, including BMX, Motocross and Snowboarding. He also assists corporations with intra-company transfers, and assists companies from around the world establish U.S. offices, branches etc. in the U.S., and assists international students obtain visas, J-waivers, employment authorization, change status or otherwise transition into employment status. He has also assisted many individuals and firms in the science, business, IT, entertainment and academia disciplines to obtain work authorization and U.S. permanent residency, including those scientists, artists, athletes, scholars and other individuals of extraordinary ability who seek permanent residency in the U.S., without a job offer, in order to pursue their unique talents.

SESSION IV

3:30 – 3:45 p.m.

ADVANCED LEGAL WRITING:

Ten Simple but Effective

Tips and Techniques

Senior paralegals and attorneys at law firms large and small agree – the paralegal who can insightfully, critically and creatively use simple but expressive language to organize and analyze complicated legal concepts and fact scenarios is an irreplaceable asset to any busy law firm. This workshop will focus on: (1) some common problems and pitfalls in legal writing for paralegals; and (2) remarkably easy and effective tips and techniques applicable to both informational and adversarial legal writing.

1.25 NFPA CLE Credits Pending

1.25 Keystone Alliance CLE Credits Approved

**Glenn D. Barnes, Esquire
Professor, Legal Studies
Peirce College, Philadelphia, PA**

Glenn Barnes is Professor of Legal Studies at Peirce College in Philadelphia. He graduated *cum laude* with a Bachelors of Arts degree in English and Classics from Cornell University in 1981 and received his *Juris Doctor* degree from Suffolk University School of Law in 1985, where he was awarded the *Am Jur Award* in Tort Law. Professor Barnes began his practice in 1985 as a trial attorney in Boston, Massachusetts and subsequently opened his practice in the Philadelphia area in 1993. He has his own general civil law practice, concentrating in the areas of business and employment law, commercial and tort litigation and family and estate law. He also works as an employment law consultant whose clients have included Robert A.M. Stem Architects, the American Society of Mechanical Engineers (ASME) and the U.S. Postal Service. He is a published writer who was the First Place winner of the Philadelphia City Paper Annual Poetry Contest in 2001 and a Pew Fellowship in the Arts finalist in 2002. Professor Barnes served in 2009 - 2010 as President, and in 2010 - 2013 as Executive Secretary and President Emeritus of the Mid-Atlantic Academy of Legal Studies in Business, as well as the Assistant Editor of the *Atlantic Law Journal* in 2010.

Professor Barnes has been teaching legal studies since 1994 and has been a member of the Peirce College faculty since May 2003. In 2008, Professor Barnes won the prestigious Peirce College *Hamilton Award for Academic Excellence and Integrity*. In 2010, he was promoted to full professor.

**Ivy M. Kempf, Esquire
Professor, Legal Studies
Peirce College, Philadelphia, PA**

Ivy M. Kempf received her J.D. from Rutgers School of Law-Camden. While attending Rutgers School of Law, Professor Kempf was a Dean's Merit Scholar and participated in Hunter Moot Court. Prior to joining Peirce College, Professor Kempf practiced law in a corporate and commercial litigation firm, where she independently managed, counseled and litigated a caseload of over 130 top Fortune 500 and Fortune 50 clients in commercial, contract and business related matters.

Professor Kempf's primary instructional focus areas are: Business and Corporate Law, Contract Law, Criminal Law, Civil Litigation and Legal Research and Legal Writing. She is also co-chair of the college's Writing and Information Literacy Committee.

Professor Kempf is licensed to practice law in New Jersey and Pennsylvania. She is also admitted to practice in the U.S. District Court for the Eastern District of Pennsylvania and the U.S. District Court of New Jersey.

SESSION IV

3:30 – 3:45 p.m.

TECHNOLOGY:

Modern Litigation Practices

Using Social Media

This program will address legal and ethical issues raised by using social media/networking sites in the litigation process. Topics covered include how law firms/corporations may use social networking in their litigation efforts, best practices in searching and using social media and the current state of the law as to discovery of social media. Discovery issues and pitfalls when searching social media for use at trial will also be reviewed. Finally, the presentation will cover the use of social media in learning more about and monitoring jury panels.

1.25 NFPA CLE Credits Pending

1.25 Keystone Alliance CLE Credits Approved

**S. Ross Suter, Esquire
Magna Legal Services**

Ross Suter, Esquire is a Senior Litigation Consultant at Magna Legal Services. He is an experienced litigator who has turned his attention to litigation and trial consulting, where he has been involved in the development of trial strategy and tactics, jury selection and voir dire, implementing shadow juries, witness communication training, development of themes and arguments, demonstrative evidence preparation and teaching persuasion techniques.

Ross has both tried and consulted on a range of cases from contract disputes to intellectual property to commercial litigation to mass tort matters. He has experience working with AMLAW 200 firms, corporations and insurance companies.

In addition to his work with Magna Legal Services, Ross is a frequent guest lecturer and presenter to prominent law firms, universities, law schools, trade groups and legal associations on such topics as litigation strategies, litigation graphics, litigation and technology and trial presentation.

He received his Juris Doctorate from Widener University School of Law. Ross also has a Master of Science degree from Villanova University and a Bachelor of Arts degree from McDaniel College.



Golkow Technologies wishes
The Philadelphia Association of Paralegals
a Happy 40th Anniversary.

Your presence in the
Philadelphia Legal Community
has been a shining star.

Happy Anniversary!

deps@golkow.com
877-370-DEPS (3377)

THE PHILADELPHIA ASSOCIATION OF PARALEGALS,
GOLKOW TECHNOLOGIES and
TOOTSIE'S SALAD EXPRESS

INVITE YOU TO A RECEPTION AT



FREEMAN'S
AUCTIONEERS & APPRAISERS SINCE 1805

Freeman's, America's oldest auction house, has successfully sold countless collections of fine art, jewelry and all manner of antiques, often achieving exceptional prices, on behalf of estates, private collections and museums.

**Tootsie's
Salad Express**

Reading Terminal Market
12th & Arch Streets
Philadelphia, PA

Call (215) 928-9240 or e-mail salad-express.com.

FREEMAN'S

1808 Chestnut Street
Philadelphia, PA 19103

Friday, November 8, 2013

5:00 – 7:00 p.m.

Enjoy complimentary appetizers
and beverages

Private Viewing
of Autumn Auctions

*American Furniture, Folk and Decorative Arts
The Pennsylvania Sale
Silver & Objets de Vertu*

GOLKOW
GLOBAL DEPOSITION SERVICES

To learn more about Golkow's services, call
Renee Mazzeo at (215) 717-7766 or
e-mail RMazzeo@golkow.com.

Celebrating 40 years!



Invitation designed by PAP Member, Susan Evans.

HOMEMADE SALADS

Black Bean Salad

Black beans with diced tomato, corn and onions with cilantro, olive oil and lemon juice

Broccoli & Crab Salad

Fresh blanched broccoli with surimi crab and mayo

Chicken Salad

The best you'll ever taste - chicken breast finely chopped with relish, celery and mayo

Cole Slaw

Freshly chopped cabbage with awesome dressing!

Crab Salad

The biggest crowd pleaser - Surimi crab with red onion, celery, dill, pepper and mayo

Macaroni & Shrimp Salad

Elbow macaroni with shrimp, surimi crab, old bay seasoning and mayo

Potato Salad

Red potatoes with celery, onion and mayo - it's fresh and delicious!

Tri-Color Pasta with Vegetables

Colorful curly pasta with carrots, mushrooms, peppers, broccoli, cauliflower, tomatoes, cucumbers and celery with sun-dried tomato vinaigrette dressing

Tuna Salad

Tuna packed in water with finely chopped celery and mayo

Tomato & Cucumber Salad

Fresh tomatoes and cucumbers in balsamic vinegar and olive oil with a touch of oregano!

GARDEN SALADS

Tossed Salad - a bowl of beautiful colors!

Fresh Romaine and Iceberg Lettuce with Tomatoes, Cucumbers, Carrots, Red Cabbage, Mushrooms and Peppers (Red Onions upon request!)

Choice of three dressings below

Caesar Salad

Fresh Romaine with Caesar Dressing & Delicious Homemade Croutons

Chicken Caesar Salad

Spring Mix with Grilled Chicken, Feta Cheese and Homemade Croutons served with Balsamic Vinegar and Olive Oil and Fat Free Raspberry Vinaigrette Dressing.

Tootsie Salad

Spring Mix with Grilled Chicken, Feta Cheese and Homemade Croutons served with Balsamic Vinegar and Olive Oil and Fat Free Raspberry Vinaigrette Dressing.

DRESSINGS

Balsamic Vinaigrette • Blue Cheese • Caesar • Creamy Caesar • French Honey Dijon • Peppercorn Ranch • Sun Dried Tomato Vinaigrette
Lite Italian • Lite Ranch • Lite Thousand Island • Balsamic Vinegar
Fat Free Catalina • Fat Free Raspberry Vinaigrette • Olive Oil • Red Wine Vinegar

DESSERTS

Banana Split Cake: Small-\$20 Large-\$40

Carrot Cake: \$20 • Black Forest Cake: \$20

Apple Cinnamon Cake - \$25 • Banana Bread - \$25

Chocolate Chip Banana Bread - \$30

Fresh Fruit Salad: Small-\$40 Medium-\$50 Large \$60

Tootsie's Salad Express

**HOT &
COLD
BUFFET**

READING TERMINAL MARKET

12th & Arch Streets • Philadelphia, PA 19107
(215) 928-9240 • Fax (215) 928-0681

www.salad-express.com • email: tootsie@salad-express.com

Marion D'Ambrosio (a/k/a Tootsie Iovine)

Owner/Catering Manager • Cell (215) 313-8421

BREAKFAST

Assorted Bagels with Cream

Cheese,

Butter & Jelly

\$20 dozen

HALF

Scrambled Eggs

w/Cheese

w/Vegetables

Fried Potatoes

Breakfast Sausage

Chicken, Turkey or Pork

Fried Whiting Fish

Grits

per link

\$20 \$40

\$23 \$46

\$23 \$46

\$20 \$40

\$1.25

\$25 \$50

\$25 \$50

\$25 \$50

\$25 \$50

\$25 \$50

\$25 \$50

\$25 \$50

\$25 \$50

\$25 \$50

\$25 \$50

\$25 \$50

\$25 \$50

\$25 \$50

\$25 \$50

\$25 \$50

\$25 \$50

\$25 \$50

\$25 \$50

BOX LUNCH SANDWICH \$8

Choice of Sandwich, one side and dessert

SANDWICH (Please specify Roll or Wrap)

- Crab Salad
- Chicken Salad
- Ham & Cheese
- Cheese
- Tuna Salad
- Italian Hoagie
- Turkey &

SIDES

- Cole Slaw
- Potato Chips
- Potato Salad
- Black Bean Salad
- Tomato & Cucumber Salad
- Tri-Color Pasta Salad w/ Veg

DESSERT

- Fresh Fruit Salad
- Homemade Banana Bread
- Banana Split Cake
- Apple Cinnamon Cake
- Chocolate Chip Banana Bread

BOX LUNCH SALAD \$9

Served with roll, butter and choice of dessert

- Chicken Caesar Salad
 - Tootsie Salad
 - Tossed Green Salad
- with choice of dressing

All box lunches include utensils, condiments and a toothpick!

MEAT DISHES

<u>PAN PRICES</u>	
<u>HALF</u> Serves 10-15	<u>FULL</u> Serves 20-25

Chicken Marsala	Boneless Sautéed Chicken Breast with Marsala Wine Sauce and Mushrooms	\$40	\$80
Chicken Picante	Boneless Sautéed Chicken Breast with Lemon and Wine Sauce with Capers	\$40	\$80
Sesame Chicken	Baked Chicken Marinated in Sweet & Sour Sauce topped with Sesame Seeds	\$40	\$80
Chicken Parmesan	Boneless Chicken with Mozzarella Cheese and Marinara Sauce	\$40	\$80
Chicken Fingers	Boneless Chicken Breast , breaded and fried to perfection	\$40	\$80
Honey Dijon Chicken	Roasted Chicken Marinated with Honey Dijon Seasonings	\$25	\$50
Rosemary Chicken	Roasted Chicken Marinated in Lemon, Butter and Fresh Rosemary	\$25	\$50
BBQ Chicken	Roasted Chicken with BBQ Sauce	\$25	\$50
Sweet & Sour Chicken	Roasted Chicken with Sweet & Sour Sauce	\$25	\$50
Fried Chicken	Chicken Fried in “Betty’s Magic Batter”	\$30	\$60
Buffalo Wings	Fried Chicken Wings with Hot Sauce	\$45	\$90
Philly Cheesesteaks	Served with Fried Onions on the side!	\$50	\$100
Roast Beef	Sliced for Sandwiches with Homemade Gravy	\$50	\$100
Pepper Steak	Tender Steak with Peppers and Onions in a rich brown sauce	\$45	\$90
Meatballs	Italian Meatballs in Sauce	\$25	\$50
BBQ Beef	Roast Beef Chunks in Delicious BBQ Sauce	\$45	\$90
Meatloaf	Just like Mom made it with Homemade Gravy	\$25	\$50
Kielbasi & Sauerkraut	Polish Kielbasi with Sauerkraut – a perfect match!	\$25	\$50
Sausage, Peppers & Onions	Sweet Italian Sausage w/ Peppers, Onions & Sauce	\$35	\$70
Roast Pork	Sliced for Sandwiches with Homemade Gravy	\$45	\$90
BBQ Pork Ribs	Smothered in Delicious BBQ Sauce	\$45	\$90
Baked Ham with Pineapples	Sliced Ham Baked with Pineapples	\$45	\$90
Roast Turkey	Sliced Thick or Thin with Gravy	\$50	\$100
Baked Whiting Fish	Baked with Lemon and Butter	\$20	\$40
Fried Whiting Fish	Fried in “Betty’s Magic Mixture”	\$20	\$40
Fish Cakes	Delicious fish cakes served with cocktail and tartar sauce	\$20	\$40

PASTA DISHES

<u>PAN PRICES</u>	
<u>HALF</u> Serves 10-15	<u>FULL</u> Serves 20-25

Baked Ziti	Ziti with Ricotta Cheese and Sauce topped with Mozzarella Cheese	\$25	\$50
Broccoli, Cheese & Pasta	Shell Pasta with Broccoli and Cheese Sauce	\$25	\$50
Macaroni & Cheese	Elbow Macaroni with Creamy Cheddar Cheese Sauce	\$25	\$50
Pasta & Clams (choice of Spaghetti or Penne)	Pasta and Clams in White Clam Sauce	\$25	\$50
Pasta & Mushrooms (choice of Spaghetti or Penne)	Pasta with Sautéed Mushrooms in Garlic and Oil	\$25	\$50
Tuna Casserole	Delicate Egg Noodles with Tuna	\$25	\$50
Vegetable LoMein	LoMein noodles with Steamed Vegetables	\$25	\$50

VEGETABLES

	<u>Half</u>	<u>Full</u>		<u>Half</u>	<u>Full</u>
Corn	\$20	\$40	Baked Beans	\$15	\$30
Stuffing	\$25	\$50	Blackeye Peas	\$15	\$30
Carrots	\$20	\$40	Sweet Potatoes	\$25	\$50
Cabbage	\$20	\$40	Collard Greens	\$25	\$50
White Rice	\$15	\$30	Mashed Potatoes	\$15	\$30
Brown Rice	\$15	\$30	Stewed Tomatoes	\$20	\$40
Rice Pilaf	\$20	\$40	Pineapple Stuffing	\$25	\$50
Green Peas	\$15	\$30	Roasted Red Potatoes	\$20	\$40
Lima Beans	\$15	\$30	Roasted Peppers	\$30	\$60
String Beans	\$25	\$50			
Vegetable Medley (Broccoli, Cauliflower & Carrots)				\$25	\$50
Vegetable Medley (Zucchini, Squash, Onion & Mushroom)				\$30	\$60

- **2’ HOAGIES** (can be cut into 8 pieces for sandwich tray)
Choice of Turkey, Ham, Roast Beef and Cheese with lettuce, tomato, mayo & mustard \$15
- **Wraps** - \$5 each
Choice of Chicken Salad, Tuna Salad, Turkey & Cheese, Ham & Cheese, Chicken Caesar
- **Italian Club Rolls** - \$6/dozen

APPEZIZERS

Bruschetta served with sliced baguette - \$10 pint	
Cocktail Franks - \$1 each (2 dozen minimum)	
Stuffed Mushrooms - \$1.50 each	
Vegetable Crudite	Small \$40 Medium \$50 Large \$60
Beautiful tray of fresh vegetables with dip in a pepper in the middle of the tray (it’s so cute!)	
Shrimp Cocktail - \$2 each (16-20 count)	
Served with cocktail sauce and lemons	



We can assist you with Corporate and UCC searches.

We are Signature Information Solutions® - provider of Charles Jones® and Data Trace® products and services. We offer a full suite of corporate and UCC products for your due diligence needs.

- ✓ Experience you can trust - 55 years of combined experience in corporate and UCC searching.
- ✓ Online order entry and retrieval - you can access your searches right when you want them.
- ✓ Expert customer service staff available to assist via Live Chat, email or telephone.

- UCC PLUS Search (NJ)
- Corporate Status Report
- Good Standing Certificate
- Franchise Tax Report
- Corporate Copies
- Nationwide Corporate Services

Also offering NJ Judgment Lien and
Child Support Judgment Searches

Call Lyman Hopper
or visit our
website

609-218-4037
www.signatureinfo.com

Congratulations to
The Philadelphia Association of Paralegals
on your 40th Anniversary!



SIGNATURE
INFORMATION SOLUTIONS®

The Philadelphia Association of Paralegals' 2013 Education Conference

Friday, November 8, 2013
Radisson Plaza – Warwick Hotel
220 S. 17th Street
Philadelphia, Pennsylvania 19103

REGISTRATION FORM

Registration Deadline is October 25, 2013
(Limited Space will be available for walk-ins)

NAME OF REGISTRANT: _____

SESSION ONE 9:00 a.m. to 10:15 a.m.

Please check one seminar from this session that you would like to attend:

Ethics: Legal Ethics - Life Lessons	Crystal	_____
Instructor: Gary Melhuish, Manager		
Health Care Reform: History is Made...Now What?	Chancellor	_____
Instructor: Thomas A. Hutton, Esquire		
Corporate/In-House/eDiscovery: Corporate eDiscovery	Cherry	_____
Instructor: Gerard G. Boccuti, Esquire		
Litigation: (Personal Injury) How to Handle the Difficult Client	Warwick	_____
Instructor: John DeFeo, Esquire		

SESSION TWO 10:45 a.m. to 12:00 p.m.

Please check one seminar from this session that you would like to attend:

Employment Law: Workplace Bullying: Is it Illegal?	Chancellor	_____
Instructor: Eric Matusewitch, PHR, CAAP		
Estates & Trusts: Ethics Issues in Estate & Trust Administration	Cherry	_____
Instructor: G. Bradley Rainer, Esquire		
Intellectual Property: Trademark Basics and Prosecution	Warwick	_____
Instructor: Gary A. Hecht, Esquire/Tristram Fall, Esquire		
Legal Research: Using the Internet: If It Isn't All There, How Am I Supposed to Find It?	Crystal	_____
Instructor: Dan Giancaterino, MS		

SESSION THREE 2:00 p.m. to 3:15 p.m.

Please check one seminar from this session that you would like to attend:

Consumer Law & Protection: Primer on the Basics of Consumer Bankruptcy Practice & the Fair Credit Reporting Act	Cherry	_____
Instructor: Stephen Dunne, Esquire		
Estates & Trusts: Generation Skipping Transfer Tax Planning Basics	Chancellor	_____
Instructor: Ross E. Bruch, Esquire		
Intellectual Property: Termination Provisions Under The 1976 Copyright Act	Warwick	_____
Instructor: Lori Landew, Esquire/Edward L. Brant, Esquire		
Litigation: Construction Litigation	Crystal	_____
Instructor: Larry Bendesky, Esquire		

SESSION FOUR 3:30 p.m. to 4:45 p.m.**Please check one seminar from this session that you would like to attend:**

Alternative Dispute Resolution: Orphans' Court Mediation	Chancellor	_____
Instructor: William H. Donahue, Jr., Esquire, APM		
Immigration: What a Paralegal Needs to Know to Succeed and Thrive in Immigration Practice	Cherry	_____
Instructor: David E. Piver, Esquire		
Legal Writing: Advanced Legal Writing: Ten Simple But Effective Tips and Techniques	Warwick	_____
Instructors: Glenn Barnes, Esquire/Ivy M. Kempf, Esquire		
Technology: Modern Litigation Practices Using Social Media	Crystal	_____
Instructor: S. Ross Suter, Senior Litigation Consultant		

SEMINAR FEES

PAP MEMBER Full Day Rate (includes participation in all four sessions with lunch)*	\$165.00
PAP MEMBER Half Day Session (includes participation in two consecutive sessions with lunch)	\$130.00
ATTORNEY/NON MEMBER Full Day Rate (Includes participation in all four sessions with lunch)	\$200.00
ATTORNEY/NON MEMBER Half Day Session (Includes participation in two consecutive sessions with lunch)	\$160.00
STUDENT Full Day Rate (Includes participation in all four sessions with lunch)	\$95.00
STUDENT Half Day Session (Includes participation in two consecutive sessions with lunch)	\$65.00
LUNCH ONLY	\$50.00

LUNCH SELECTION**(Choose One)**

<input type="checkbox"/> Chicken	<input type="checkbox"/> Salmon	<input type="checkbox"/> Vegetarian/Gluten Free
----------------------------------	---------------------------------	---

Name: _____**Firm/School:** _____**Address:** _____**Email:** _____**Amount Enclosed:** \$ _____

***TUITION BREAK: Get a 10% discount for 2 or more attendees from the same organization or firm with a full day attendance with lunch. This discount does not apply to students. To qualify for the tuition discount, registration must occur on or before October 18, 2013.**

Please make checks payable to: The Philadelphia Association of Paralegals**Mail payments to:****The Philadelphia Association of Paralegals, P.O. Box 59198, Philadelphia, PA 19102-9198****NEW: You can also Pay with PayPal****EMAIL REGISTRATION FORMS TO: PhilaParalegals@verizon.net****NO REFUNDS**

Membership lists are now available for purchase.

To opt-out, check box(es):

☐ **NFPA**☐ **PAP**



The Philadelphia Association of Paralegals

P.O. Box 59198, Philadelphia, PA 19102-9198

Telephone: (215) 255-8405

Website: www.Philaparalegals.com

Email: PhilaParalegals@verizon.net

Board of Directors

President

Judy Stouffer, RP®
jstouffer@bkwfamily.com
215.790.8800

1st Vice President

Vivian Luckiewicz, RP®, Pa.C.P.
vivian.luckiewicz@franklinsquare.com
215.220.6151

2nd Vice President

Lyndora Patterson Tiller
lyndora.patterson@ibx.com
215.241.3556

Secretary

Babette Pace
babette.pap@gmail.com
215.683.5113

Treasurer

Karen Daemer, Pa.C.P.
kdaemer@saul.com
215.972.7848

Board Advisor

Christine Flynn
cflynn@hgsklawyers.com
267.350.6600

Board Member

Victor Panieczko, CRP™, Pa.C.P.
victor.panieczko@flastergreenberg.com
215.279.9393

Board Member

Jo-Ann Williams
onpoint9@verizon.net
267.299.2908

Committees and Sections

Bankruptcy

Open for new Chairperson(s)

Education

Lyndora Patterson Tiller
lyndora.patterson@ibx.com
215.241.3556

Employee Benefits

Open for new Chairperson(s)

Environmental Awareness

Judy Stouffer, RP
jstouffer@bkwfamily.com
215.790.8800

Estates & Trusts

Karen Daemer, Pa.C.P.
kdaemer@saul.com
215.972.7848

Kathy Massimo, Pa.C.P.

kmassimo@saul.com
215.972.1971

Family Law

Open for new Chairperson(s)

40th Anniversary Gala

Christine Flynn
cflynn@hgsklawyers.com
267.350.6600

Historian

Lyndora Patterson Tiller
lyndora.patterson@ibx.com
215.241.3556

Immigration

Anna Maria Jakubowska-Glowacka
annamaria@piverlaw.com
610.975.4599
Victor Panieczko, CRP™, Pa.C.P.
victor.panieczko@flastergreenberg.com
215.279.9393

In-House Practice

Jennifer K. Mami
jennifer.k.mami@thesiorg.com
484.681.7637

Intellectual Property

Wendy Reczek, Pa.C.P.
wereczek@aol.com
267.934.2610

Job Bank

Vivian Luckiewicz, RP®, Pa.C.P.
vivian.luckiewicz@franklinsquare.com
215.220.6151

Keystone Alliance Primary

Karen Daemer, Pa.C.P.
kdaemer@saul.com
215.972.7848

Keystone Alliance Secondary

Victor Panieczko, CRP™, Pa.C.P.
victor.panieczko@flastergreenberg.com
215.279.9393

Legal Intelligencer

Christine Flynn cflynn@hgsklawyers.com
267.350.6600

Legalmen Project

Christine Flynn
cflynn@hgsklawyers.com
267.350.6600

Litigation

Monica Londo
mlondo@comcast.net
215.299.4291

Medical-Legal

Monica Londo
mlondo@comcast.net
215.299.4291

Member Services

Christine Flynn
cflynn@hgsklawyers.com
267.350.6600

Newsletter

Jo-Ann Williams
onpoint9@verizon.net
267.299.2908

NFPA Primary

Christine Flynn
cflynn@hgsklawyers.com
267.350.6600

NFPA Secondary

Babette Pace
babette.pap@gmail.com
215.683.5113

Paralegal Certification Ambassador

Vivian Luckiewicz, RP®, Pa.C.P.
vivian.luckiewicz@franklinsquare.com
215.220.6151

Pro Bono/Community Service

Lisa Dean
ldean@smbb.com
215.575.2980
Desiree Purvenas-Hayes, RP®
dphayes@smbb.com
215.575.2957

Professional Development

Lyndora Patterson Tiller
lyndora.patterson@ibx.com
215.241.3556

Babette Pace
babette.pap@gmail.com
215.683.5113

Programs

Valerie Clark Bolton
vclarkbolton@gmail.com
215.599.0800

Public Relations/Marketing

Theresa Coger
tcoger@ifmi.com
215.701.9555
Monica Londo
mlondo@swartzcampbell.com
215.299.4291

Technology

Babette Pace
babette.pap@gmail.com
215.683.5113

Website Coordinator

Vivian Luckiewicz, RP®, Pa.C.P.
vivian.luckiewicz@franklinsquare.com
215.220.6151



Solving business problems with People, Process and Technology